

CARNIVAL MAP AND SET UP INFORMATION

CARNIVAL	BEACH	DATE
Age Championships	Maroubra	30th and 31st January 2021

V2 published 29/01/21

The following is important LOGISTICS information in relation to the Surf Life Saving Sydney Branch AGE Championships.

TRAILERS AND PARKING

Craft Trailers

Craft trailers will have a designated area for their unloading, loading and parking during the carnival period. This is designed to allow for effective management of the parking areas and traffic management of the Maroubra Beach precinct.

All craft trailers are to be parked in the east section of Broadarrow Reserve that is situated on Mons Avenue, Maroubra Beach (Pictured in Map 1.1 and 1.2 below). Car park entry is opposite Fenton avenue A marshal will direct you where to park within this sectioned off area. Please arrive early to secure a place.

Once parked you will be able to unload your trailer, and using the pedestrian crossings cross Mons Avenue initially and then Marine Parade.



Map 1.1 - Maroubra Beach



Map 1.2 - Craft trailer parking area, Broad Arrow Reserve

IRBs

IRBs rostered for the weekend are to arrive at Maroubra SLSC at their designated time and report to a Maroubra club representative. You will be able to access Maroubra SLSC to unload your IRB, and then you will be directed to park your trailer in the designated trailer parking area in Broad Arrow Reserve, Mons Avenue.



Map 1.3 - IRB unloading area

PARTNER SINCE 2001

Parking

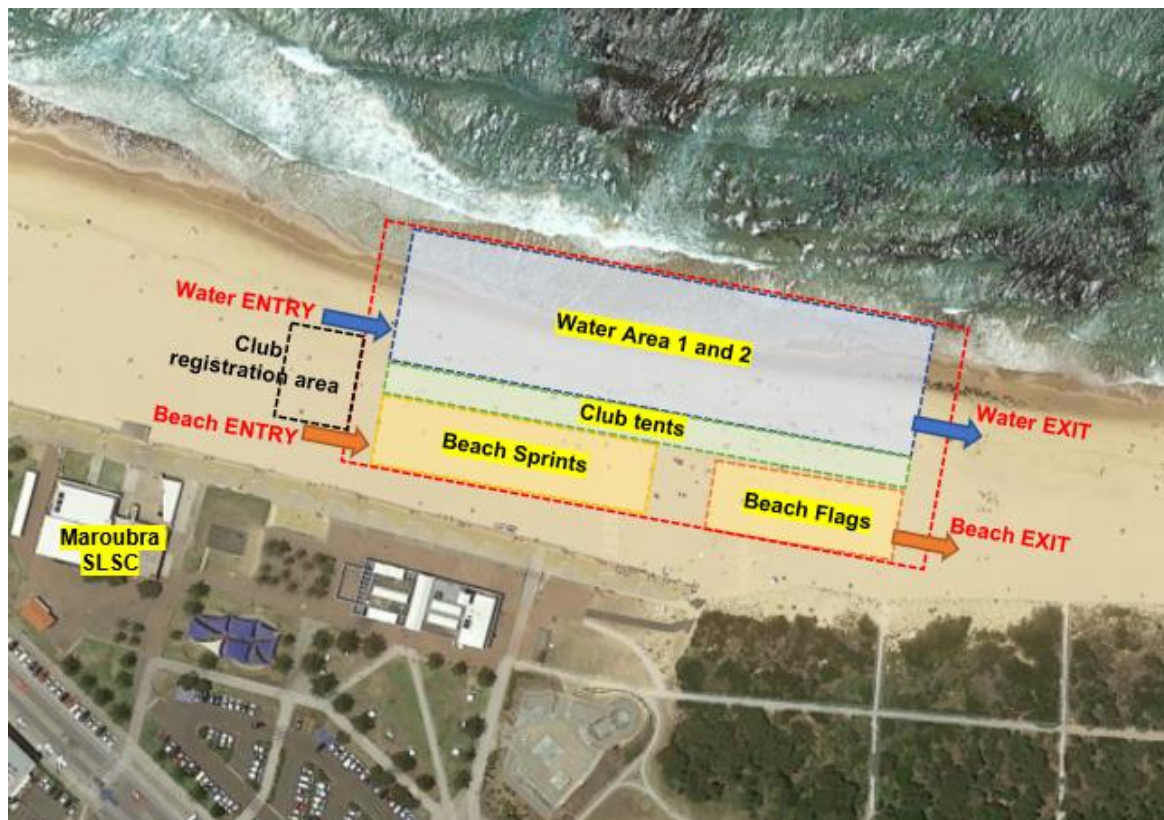
All car parking will be in the car park at rear of the Lifeguard pavilion, on public streets (please note 4 hours limits where applicable) or space permitting in Broadarrow Reserve. Please ensure you allow sufficient time to park and arrive in time for registration. All vehicles must be parked legally at all times.

NON Maroubra SLSC vehicles parked in the patrol designated area on Mons avenue, will be booked by the local ranger. Only Maroubra SLSC patrol members with appropriate signage may park in this area.

CARNIVAL LAYOUT

Pleasingly a late decision by Council lifeguards has allowed all competition to now take place within one designated area. Please refer to layout below as a guide noting exact position will be as determined by Lifeguards on the day of the carnival

N.B. While all event attendees are now able to mix in the same competition zone, the strict timetable of events agreed with council means competitors will still be restricted to competing in either beach or water events per their event registration.



Map 1.4 - Carnival Layout

PARTNER SINCE 2001



Tent Areas

A marked out area for tents (one to two max per Club) will be designated WITHIN the competition area for the use of competitors. **Clubs have until 7am to erect their tents in the zone (as guided by the Maroubra workforce).** After 7.15am until the end of competition only registered attendees wearing wristbands will be permitted in the area.

BBQ

Maroubra SLSC will be running a BBQ / drink refreshments from 7am to 10am, on the grass area in front of the Surf Club.

Amenities

Showers, toilets and change rooms are available in the Maroubra Beach pavilion or at the northern end of the beach. There will be no access provided to Maroubra SLSC.

Scrutineering

Sydney Branch Scrutineers will be scrutineering surf craft from 7am till approximately 10am each day of the carnival at the back of the Maroubra Surf Club.

COVID SAFETY INFORMATION

It is essential that all event attendees help maintain a COVID-safe environment by obeying the COVID safety directions from SLSS staff and event officials, and complying with the health directions of government and public health authorities issued at the time of the carnival.

COVID-safe declaration and QR entry

ALL event attendees, or their parents/guardians on their behalf, MUST complete the COVID safe declaration on the day of the event using the QR code provided (refer registration below for further information).

This declaration will ask event attendees to confirm:

- They are not experiencing any COVID-19 symptoms **(If you are sick, stay away from others! Do not attend the event!)**
- They have not been directed to self-isolate by an Australian Government Agency or under a Public Health Alert / Order.
- They have not been in close contact with a known COVID-19 case or a reasonably suspected case of COVID-19 without PPE, or themselves been diagnosed with COVID-19

If attendees are concerned about the declaration they should speak to their Club in advance or the appointed COVID Coordinator on the day of the carnival (Refer to COVID declaration flowchart at appendix 1).

N.B. Maroubra SLSC has their own QR code entry system for anyone that enters the Club house.

PARTNER SINCE 2001

SYD
Sydney's Airport

Handwashing and Hygiene

All attendees are encouraged to frequently sanitise, using alcohol-based hand sanitiser or wash their hands with soap and water, especially before and after eating. Hand sanitiser will be readily available at the competition defined entry and exit points and at various points within the competition area

Physical Distancing at the Events

Attendees must be mindful to maintain social distancing keeping 1.5m from other persons, excluding field of play

Water Stations

All attendees are encouraged to bring their own drink bottle with them to the event. Within the competition area will be a number of water stations where it will be possible to refill bottles.

REGISTRATION & BRIEFINGS

COVID Marshalls

All club pre-registered COVID Marshalls are to report to the **Marboura SLSC UPSTAIRS DECK by 6:45am** (please utilise the outside stairs), wearing a Club COVID vest. Once they have completed the QR entry they will be given a wristband.

The COVID Coordinator will then brief the COVID Marshalls and assign them the registration list and wristbands for their Club.

N.B. ONLY pre-registered attendees will be given wristbands to access the competition area.

Officials

On arrival all pre-appointed Officials are to register at the **Maroubra SLSC FRONT LAWN AREA by 7:00am**, wearing their officials shirts (season 19-20 new officials who have not yet collected their shirt can do so at registration).

Once the QR entry is completed a wristband will be issued. There will be a short briefing for **senior officials** at 7.10am at the upstairs deck (please utilise the outside stairs). All other officials should report directly to their assigned area by 7.30am for a briefing by the sectional referee.

Competitors, Water Safety, Handlers and Age Managers

There will be 2 Club registration sessions: 7.15am to 7.45am, AND 9.15am to 9.45am (for athletes competing from 10am). On arrival all Competitors, Water Safety, Handlers and Age Managers are to proceed to the club registration area (located adjacent to the entry to the competition area) and find their Club COVID Marshall.



The event QR code will be available around the area entrance, with the COVID Marshalls, and a copy at the end of this document. Once completed on the day the COVID Marshall will issue a wristband for entry into the competition area.

N.B. Parents / guardians are expected to remain outside the competition area. Please ensure your child has everything they require at the point of entry.

Water Safety Briefings

The water safety briefings (1st shift 7.30am, 2nd shift 9.30am, and Inclusion on Sunday 10.30am) will take place at the Maorubra SLSC upstairs deck (please utilise the outside stairs).

EVENT CONCLUSION

Please note the event has a strict end time of 12pm. **Under the event COVID Safety plan a key component and one on which we seek cooperation is that competitors adopt the mantra: “Turn up, compete, leave”.**

N.B. Maroubra SLSC will have their member bar open on Saturday, Day 1 of the carnival. Event officials who choose to attend the clubhouse after the close of the event should ensure they follow Maroubra SLSC COVID guidelines including use of the CLUB QR system on entry.

PARTNER SINCE 2001

SYD
Sydney's Airport



BRANCH AGE CHAMPIONSHIPS

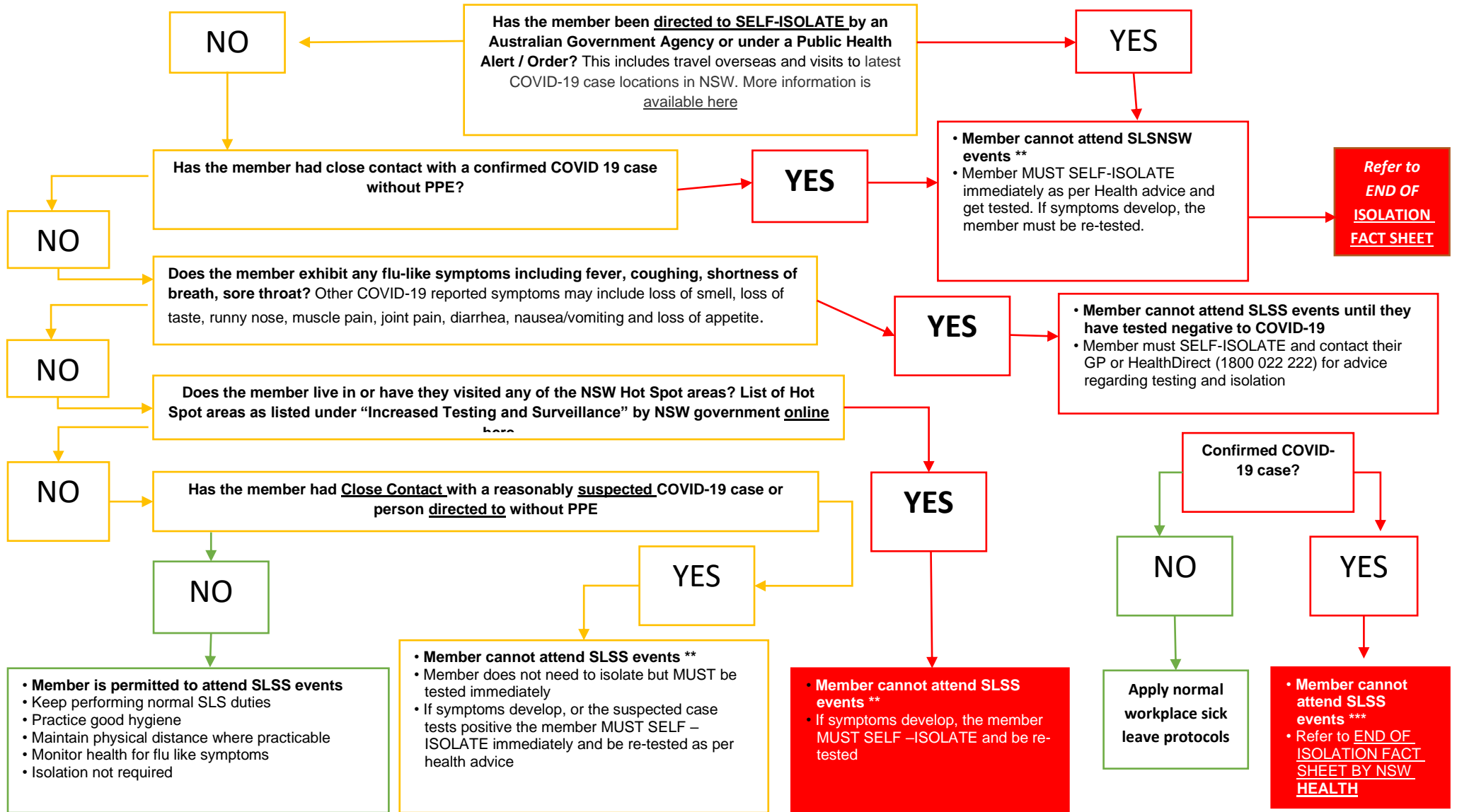
PARTICIPANT DECLARATION



**All event participants MUST compete
the online attendee declaration form on
the morning of competition**

PARTNER SINCE 2001





**** Member cannot attend SLSS Events unless they provide evidence of a negative COVID-19 test result (conducted after 14 days has passed). If they have not been tested, they will not be permitted entry until another 10 days has passed and they have remained asymptomatic.**